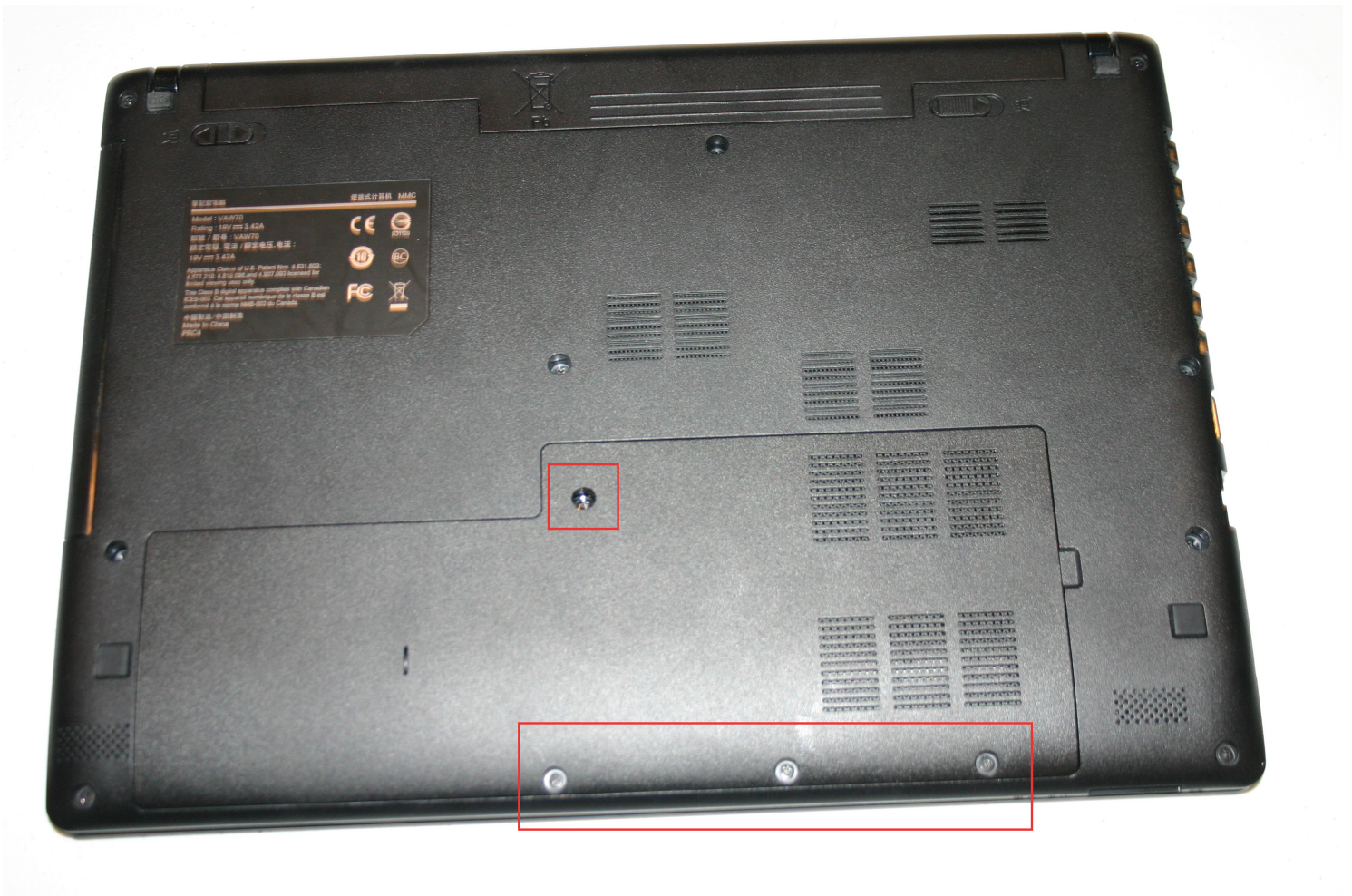
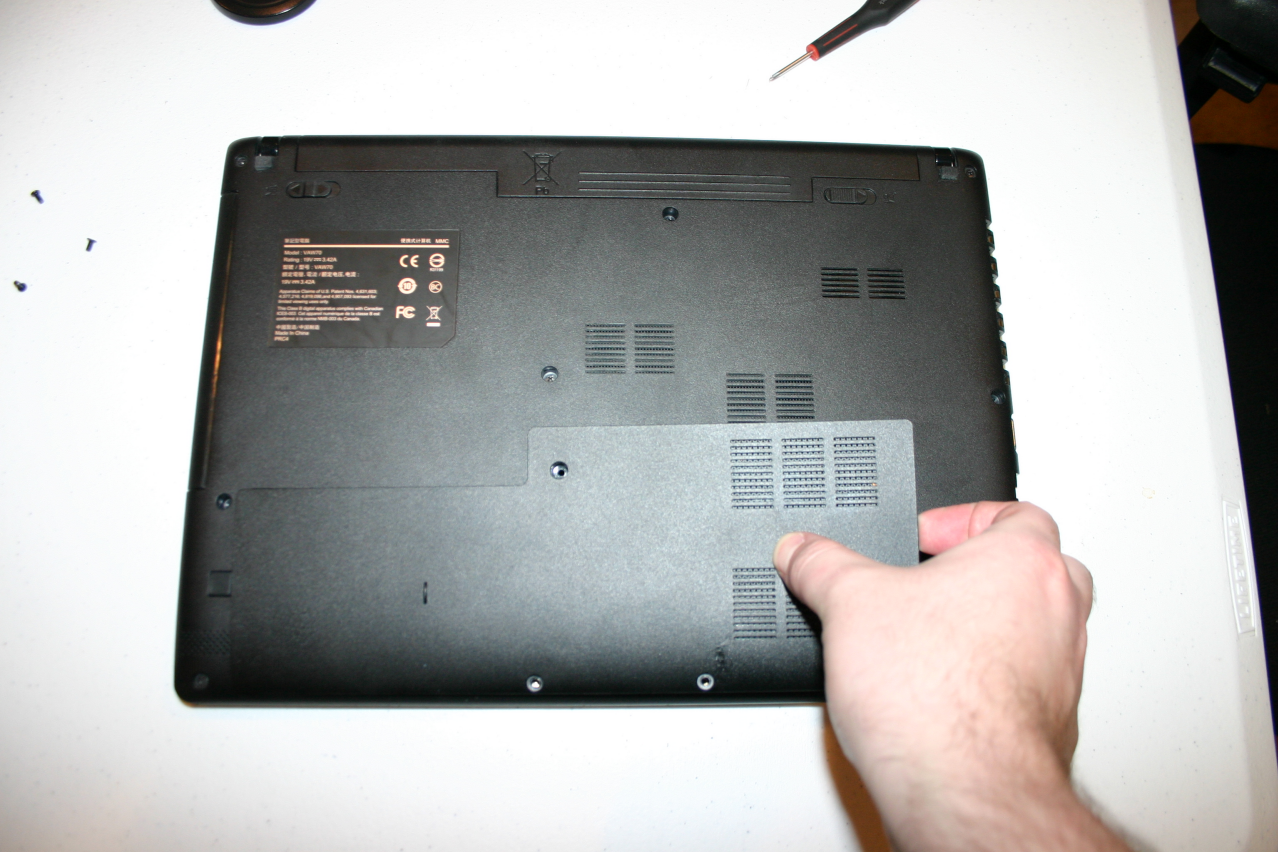
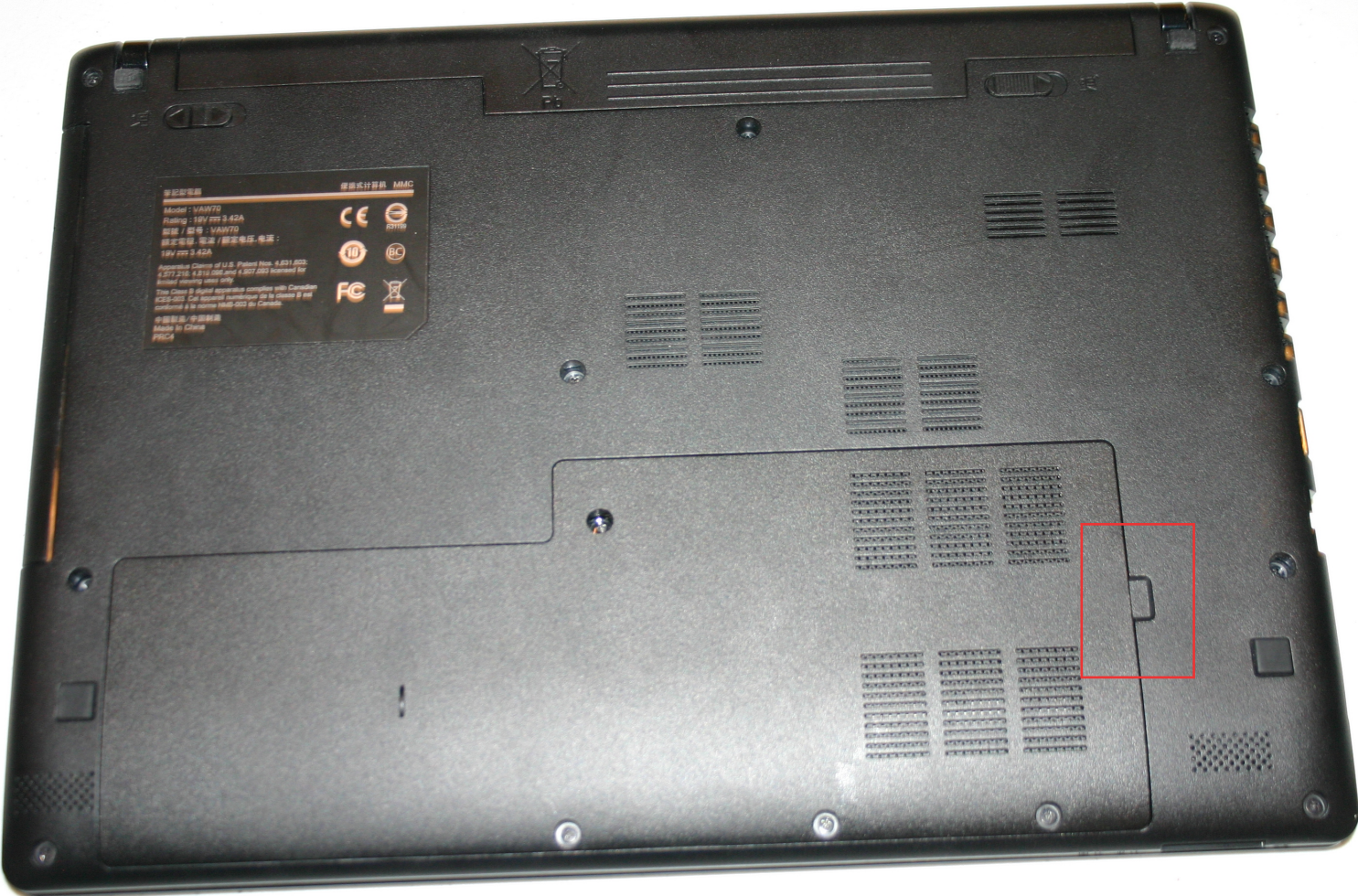


1. Unscrew the four screws holding the bottom cover on. Outlined in red.





2. Pull up on the tab shown in red to remove the cover (slowly and carefully).





3. Press down (not too hard) on the hard drive (shown in red) and pull away.



The hard drive is now removed from the system.  
(reverse this step to re-install)

Continue on next page to reconnect the cover.



4. To reconnect the bottom cover align the top part of the cover first.

Then press down on the lower portion of the cover, to snap it back together.

Re-screw any screws you removed in step 1.

